



Transforming the Future

Transforming the Future

Imagine a future where every woman and every young person can access the essential health care and nutrition they need to thrive and to fully participate in the global economy.

Investing in the health and nutrition of women, children, and adolescents saves lives AND is a high-yield economic strategy for poverty reduction, job creation, stability, and long-term prosperity. Healthy beginnings in pregnancy, early childhood, and adolescence enable young people to learn, work, and innovate — generating positive returns throughout their lives for their communities and countries.

The evidence for high return on investment is strong:

Core interventions in reproductive, maternal, newborn, child, and adolescent health and nutrition cost as little as US\$1–US\$2 per healthy year of life gained. A 10 percent increase in life expectancy at birth is associated with 0.4 percent higher GDP growth each year. Closing the women’s health gap represents a US\$1 trillion economic opportunity.

The world has the tools to end preventable maternal and child deaths and transform countries’ health and economic outcomes, yet recent gains are at risk.

Weather shocks, rising debt, regional conflicts and the lingering economic effects of the COVID pandemic have forced the poorest nations to reduce their health spending below 2019 levels. Compounding these challenges, recent cuts of at least 20 percent or more in development assistance have begun unraveling the lifesaving health services that women and children rely on most. Without concerted action, by 2030 combined government and donor health spending is projected to further decline in over 80 percent of low-income countries and 40 percent of lower-middle-income countries (LMICs).

©Mariano Silva/World Bank

The imperative now is to prevent backsliding and accelerate access to affordable, quality health care at scale.

In 2024, the number of children dying before their fifth birthday rose for the first time this century to nearly 4.9 million children, including 2.3 million newborns — 9 deaths per minute. Every day, 700 women die from preventable causes related to pregnancy and childbirth, with approximately 90 percent of those deaths occurring in LMICs. The United Nations estimates 259 million women who want to avoid pregnancy cannot access modern family planning commodities. As LMICs confront a burgeoning youth population and a massive global gap of nearly 300 million jobs within the next decade, moving from successful pilot programs to sustainable, systemwide reforms that expand affordable access to essential health services will propel opportunity, growth, and resilience — with life-changing effects for the next generation.

Investing in the Global Financing Facility (GFF) will accelerate the path to a world where no woman, child, or adolescent dies of preventable causes — and everyone can realize a healthier, more prosperous future.

As a country-led, catalytic platform hosted at the World Bank Group (WBG), the GFF is uniquely equipped to help partner countries tackle these challenges and accelerate progress, by mobilizing additional financing and prioritizing investments in the most cost-effective health interventions. By 2030, support from the GFF will enable partner countries to expand lifesaving care to hundreds of millions more women and children, build a future-fit workforce, and transform their health systems into sustainable engines of shared prosperity — ushering in a new paradigm for global health.

GFF 2030 IMPACT

With full funding, by 2030 the GFF will mobilize:

\$12.5B

in WBG financing

\$17.8B

in global partner resources

\$21.4B

in domestic resources

Bringing lifesaving care to hundreds of millions more women, children, and adolescents:

254M

Modern family planning for women and adolescent girls

126M

Antenatal care for pregnant women

194M

Safe deliveries for pregnant women

146M

Early breastfeeding for newborns

208M

Vaccinations for children



The GFF Effect: Proven Impact at Scale

MORE MONEY, BETTER RESULTS Since its launch in 2015, the GFF has demonstrated the power of its country-led, catalytic model to save lives. With its laser focus on women, children, and adolescent health and nutrition and its ability to bring cost-effective solutions to scale, the GFF is helping partner countries drive long-term health and economic impact.

The GFF model embodies the Lusaka Agenda and Accra Reset principles of country leadership and health sovereignty — and was validated by a robust independent evaluation published in April 2025.

Mobilizing more IDA financing for women, children, and adolescent health and nutrition

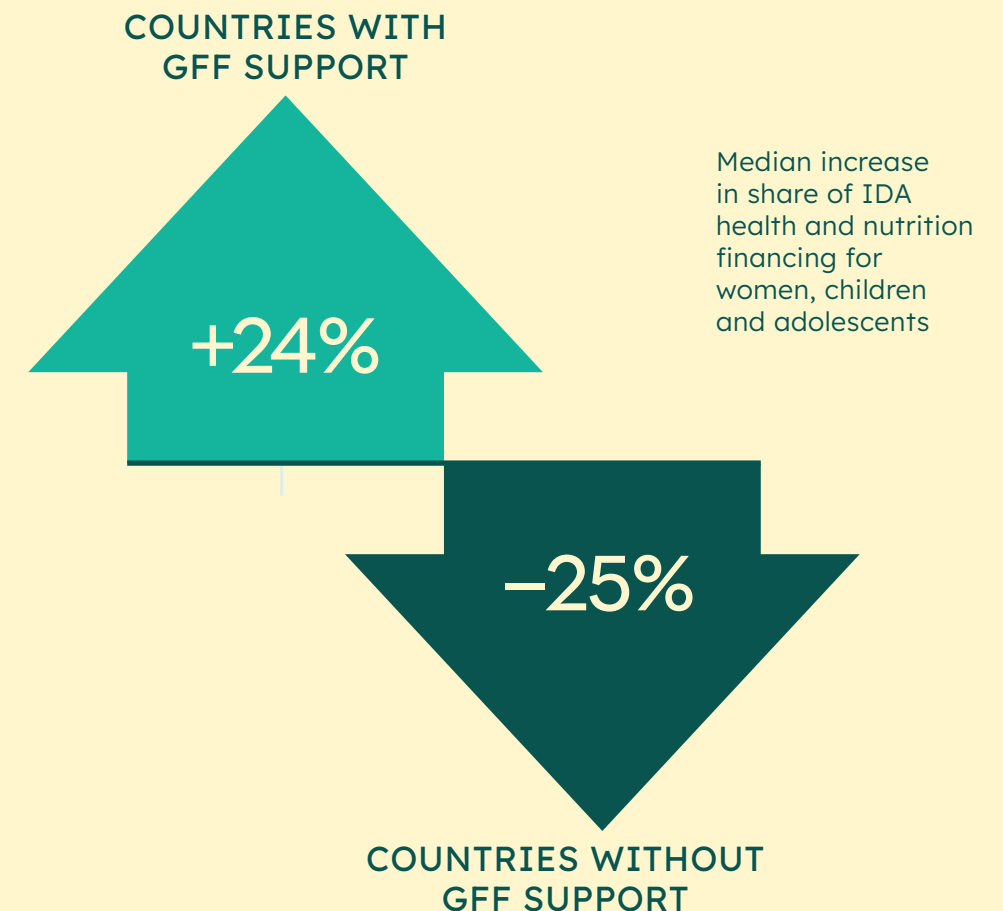
- Mobilized US\$2.5 billion in GFF grants linked to more than US\$11 billion in low-cost WBG financing from the International Development Association (IDA) and International Bank for Reconstruction and Development (IBRD).
- GFF partner countries have seen a median increase of 24 percent in their share of IDA financing for health and nutrition for women, children, and adolescents, while eligible countries not supported by the GFF experienced a 25 percent decline, a nearly 50-point difference.
- From 2022 to 2025, GFF/IDA co-financed investments in reproductive, maternal, and newborn health increased nearly five-fold, from 12 to 56 percent.

Expanding access to lifesaving care

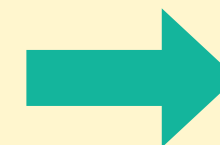
- Since joining the GFF, partner countries have become global leaders in reducing maternal and child deaths; prior to the GFF, they performed slower than the global average.
- Nearly all GFF partner countries have reduced their levels of maternal and child mortality and adolescent births, and expanded access to modern family planning.
- Three-quarters of GFF partner countries have reduced their rates of childhood stunting.

SINCE JOINING THE GFF, PARTNER COUNTRIES HAVE BECOME GLOBAL LEADERS IN REDUCING MATERNAL AND CHILD DEATHS; PRIOR TO THE GFF, THEY PERFORMED SLOWER THAN THE GLOBAL AVERAGE.

Unlocking more IDA financing for women, children, and adolescents 2015–2025



US\$2.5B
GFF GRANTS



US\$11B
WBG IDA AND IBRD
FINANCING

Source: GFF 2025.

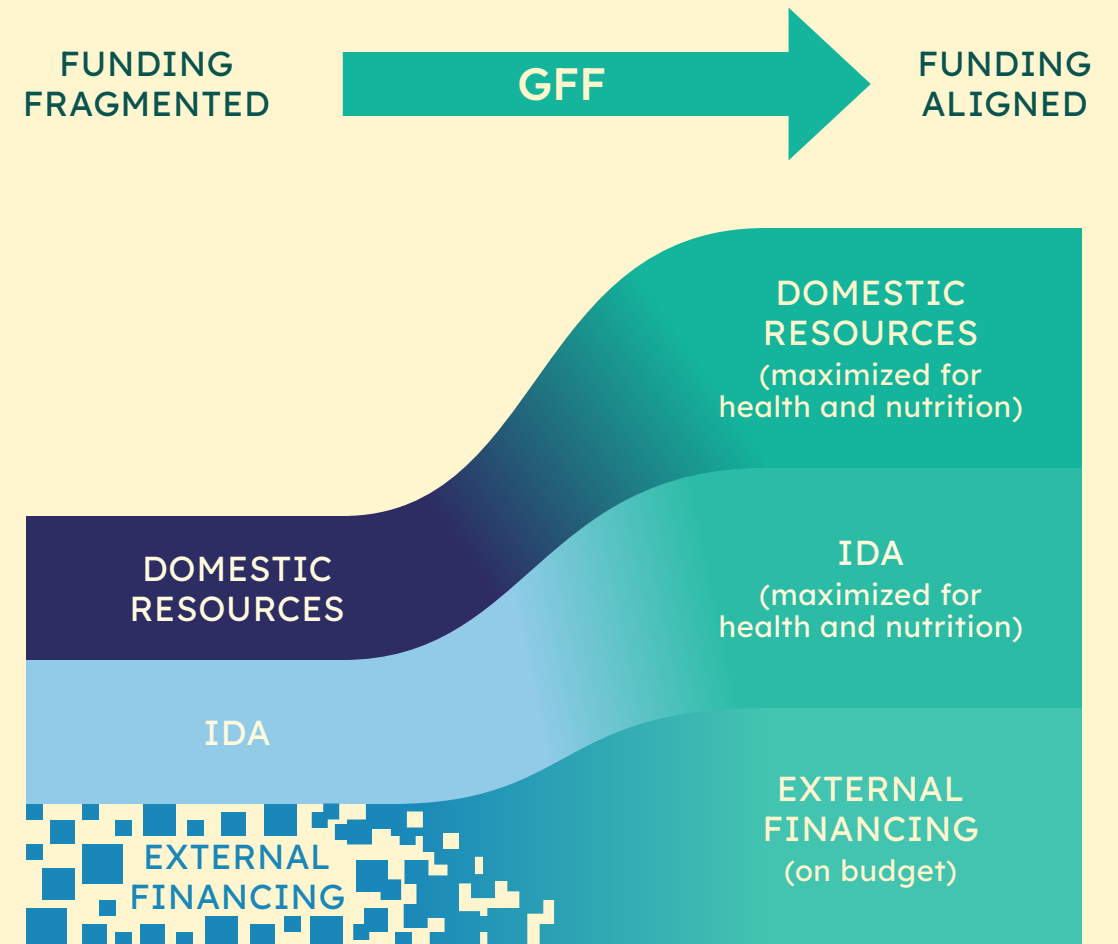
How the GFF Works

The GFF is built on a simple premise: When governments lead, partners align, and financing is well-targeted, countries can achieve dramatically better health outcomes for women and children, sustainably and at scale.

- **Governments in the lead.** The GFF supports governments to develop evidence-based plans that prioritize the highest-impact health interventions, and coalesces international partners, civil society and youth, philanthropies, and the private sector behind a single national vision — a country-first, future-fit model for global health.
- **Exceptional value for money.** Every US\$1 contributed to the GFF by donors catalyzes at least US\$7 in financing from the WBG. This unique leverage ratio means that donor contributions to the GFF translate into far greater resources on the ground than grant financing alone.
- **Force multiplier.** The GFF helps partner governments attract additional resources from external funders, reducing health sector fragmentation and duplication, and maximizing every dollar spent.
- **Hardwiring accountability.** More than 90 percent of GFF resources flow to partner countries, who lead project implementation. Through use of performance-based financing, real-time data analytics, and transparency, governments, donors, and citizens can track results and continually adapt and innovate.
- **Promoting sustainability and self-reliance.** The GFF does not just fund services — it helps countries build the resilient health systems and fiscal capacity to sustain progress long after grant support ends. This means supporting financing and policy reforms, domestic resource mobilization, and smarter public spending so countries can achieve more health for the money over time.

©Afam Studios/World Bank

Maximizing value for money



GFF ENABLES PARTNER COUNTRIES TO:

- Maximize IDA and domestic resource mobilization and use for health and nutrition
- Bring external resources on budget to drive country ownership
- Prioritize and integrate gender in health financing reforms

Source: GFF 2025.

OUR STRATEGY: TRANSFORM 2030

“The GFF’s 2030 strategy gives us a road map for a future where every health investment delivers greater equity, resilience, and value, while also ushering in the transformation to a global health architecture that is truly country-owned and integrated. The GFF is an essential partner to our countries as we strive to move from donor dependency to domestic sustainability. Its catalytic model helps us maximize every dollar – whether from our national budgets or international partners – toward high-impact health priorities that save lives, reduce poverty, and unlock the economic potential of women and youth.”

THE HONORABLE AUSTIN DEMBY
Chair, GFF Ministerial Network
Minister of Health and Sanitation, Sierra Leone



©World Bank

The GFF Strategy for 2026–2030 builds on its strong record of results over the past decade. The new strategy focuses on what the GFF does best: partnering with the WBG to maximize its financing, knowledge, and convening power through an inclusive, multistakeholder platform that bolsters country leadership, alignment, and innovation to improve health and nutrition for women, children, and adolescents.

The world has changed, and the GFF is adapting to meet it. With progress on maternal and child health stalling in too many countries and financial pressures mounting, the 2026–2030 strategy takes the GFF impact to the next level, expanding and deepening investments in proven interventions, and reaching more women, children, and adolescents in more countries – accelerating the transition to sustainably financed health systems that can deliver quality, affordable care long into the future.

The 2030 strategy will advance the GFF’s vision to end preventable deaths of women, children, and adolescents through three strategic objectives:

MOBILIZE

Secure more and smarter financing from the WBG, global partners, and domestic resources

ACCELERATE

Improve quality delivery of care and scale sustainable access to lifesaving health commodities and innovations

SUSTAIN

Promote partner country self-reliance and resilience, equipping health systems to withstand current and future shocks

Visit us online for more details on the **GFF TRANSFORM 2030 STRATEGY:**
<http://www.globalfinancingfacility.org/strategy>

Financing Scalable Solutions

The evidence is clear on what works to save more lives of women and children; the challenge now is to take the most cost-effective solutions to scale.

By integrating delivery of proven health and nutrition interventions directly into their primary health care packages, the GFF will enable partner countries to bend the curve on reducing maternal and newborn deaths. This is how smarter health systems are built: not by introducing parallel programs, but by embedding data-driven solutions into how countries plan, finance, and deliver health care to their populations — so they are well-targeted, funded sustainably, and built to last. As a global partnership hosted at the WBG, the GFF will be a critical contributor to achieving the WBG’s goal to reach 1.5 billion people with access to quality, affordable health services by 2030.

Over the next five years, the GFF will prioritize scaling up low-cost, high-impact interventions with the strongest returns on investment and greatest potential to save millions of lives, such as:

75%

FEWER MATERNAL DEATHS

SAFER BIRTHS BUNDLE OF CARE (SBBC): In 20 GFF partner countries with the highest burdens of maternal deaths, there are nearly 240,000 maternal and newborn deaths combined in hospitals annually. SBBC deploys low-cost digital tools and simulation aids through on-the-job training and continuous feedback loops so health care workers can quickly identify and respond to mothers and newborns in distress during delivery and the first few days of a child’s life. A recent study in the *New England Journal of Medicine* finds that as many as 75 percent of maternal deaths and 40 percent of early neonatal deaths in hospitals can be prevented by implementing the SBBC approach — and early evidence suggests a return on investment of US\$36 for every dollar spent.

30%

FEWER CHILD DEATHS

EARLY NUTRITION FOR GROWTH: In the 40 GFF-eligible countries with the highest number of child deaths, malnutrition is linked to 2.1 million or nearly half of all child deaths annually, and millions more children suffer from impaired brain and physical development that diminish their opportunities to thrive. Yet many of these deaths and disabilities can be prevented with a targeted bundle of cheap and highly effective solutions during the first two years of a child’s life, notably early and exclusive breastfeeding for the first six months, timely introduction of complementary feeding and micronutrient powders, and vitamin A supplementation. Research shows that breastfeeding alone can prevent 12 percent of child deaths, while vitamin A supplementation can reduce child deaths by up to 30 percent. These combined nutrition interventions show some of the highest returns on investment, with every dollar spent generating an estimated return of up to US\$35.

35%

FEWER NEWBORN DEATHS

SCALED CARE FOR SMALL AND SICK NEWBORNS: In 20 GFF partner countries with the highest numbers of newborn deaths, more than 1 million newborns die annually in health facilities. An estimated 35 percent of these deaths could be prevented by expanding delivery of low-cost interventions for small and sick newborns, such as providing premature and low birth weight babies with Kangaroo Mother Care (skin-to-skin contact and exclusive breastfeeding), treatment of common neonatal conditions, and respiratory support. Every dollar invested in this package of interventions has an estimated return on investment of up to US\$12.

30%

FEWER CHILD DEATHS

DIGITAL INTEGRATED MANAGEMENT OF NEWBORN AND CHILDHOOD ILLNESSES (IMNCI): In the 20 GFF-eligible countries with the highest numbers of child deaths, 3.6 million children under age five die every year — and more than half of these deaths are linked to nine highly preventable and treatable infections. Using digital tools, health care workers can ensure that children are protected from life-threatening diseases and that risk factors are identified and managed in a single clinic visit. Digital IMNCI applications have shown a six-fold improvement in the quality of care, resulting in up to a 30 percent reduction in child deaths — and they are highly cost-effective, improving the efficiency of care and lowering the cost of treatment.

94%

FEWER NEWBORN DEATHS AND STILLBIRTHS

SYPHILIS SCREENING AND TREATMENT: In 40 GFF-eligible countries with the largest number of stillbirths, 290,000 newborn deaths and stillbirths are associated with syphilis each year. Through strengthened integration of syphilis screening and treatment during pregnancy, 94 percent of these stillbirths and deaths can be prevented. Syphilis screening and treatment during pregnancy is also highly cost-effective, with an estimated return on investment of US\$22 for every dollar spent.

40%

FEWER CERVICAL CANCER DEATHS

CERVICAL CANCER PREVENTION, SCREENING, AND EARLY TREATMENT: Cervical cancer causes more than 170,000 deaths each year in the 40 GFF-eligible countries with the highest number of deaths due to this highly preventable disease. A single-dose HPV vaccination strategy for girls ages 9-14 is 90 to 95 percent effective in preventing HPV transmission. Even one lifetime screening of women between the ages of 35 and 45 can reduce the risk of deaths due to cervical cancer by up to 40 percent when accompanied by early treatment. Every dollar spent on HPV vaccination could yield a return on investment of up to US\$6, while early diagnosis and treatment could yield a return as high as US\$11.

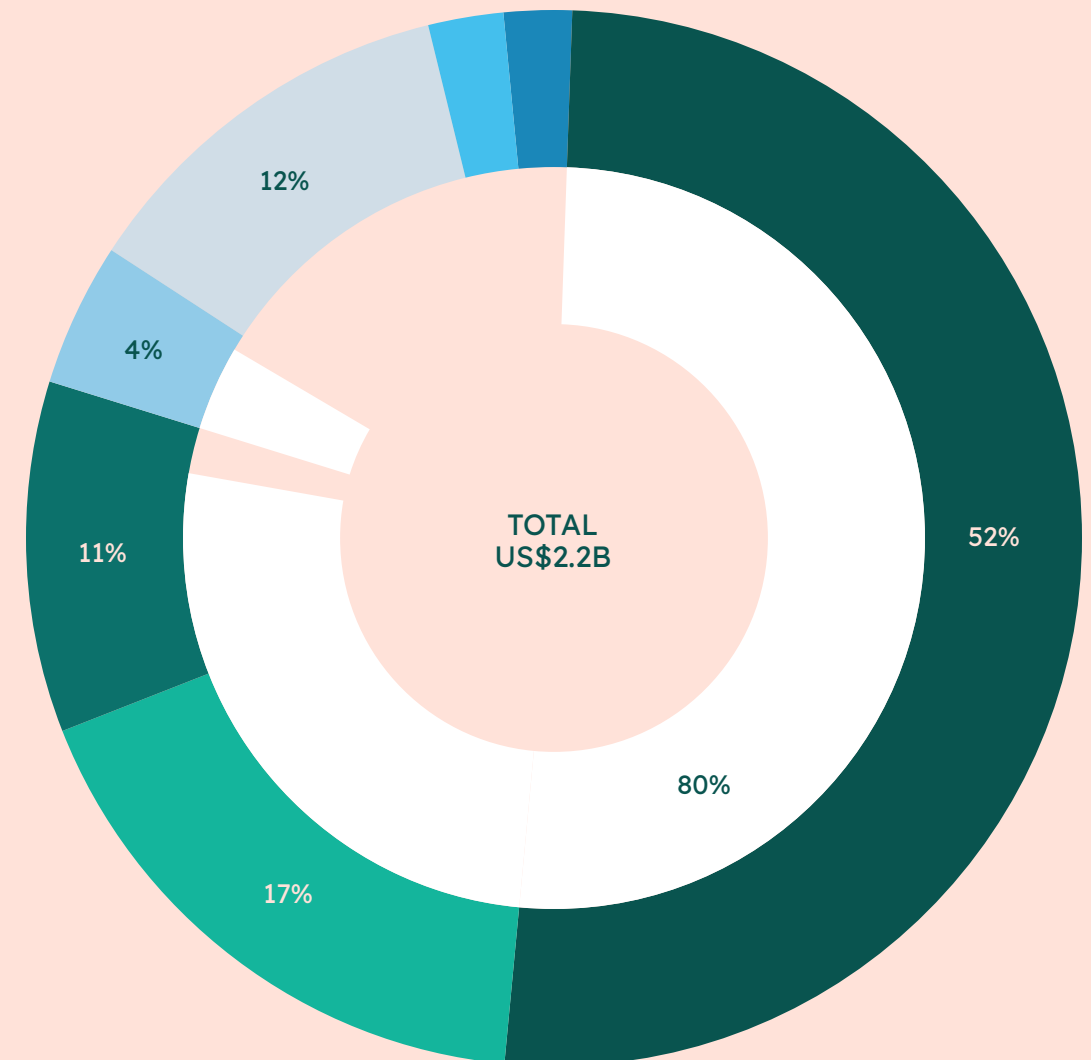
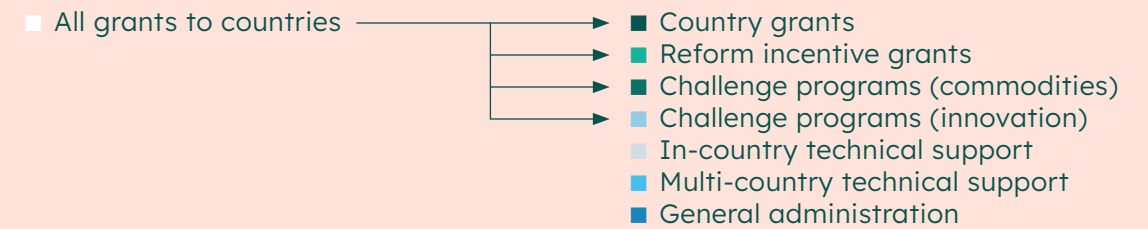
Investing in the GFF will put the vision of ending preventable maternal and child deaths within reach—and transform health systems to deliver a secure and prosperous future for all.

The Investment Opportunity

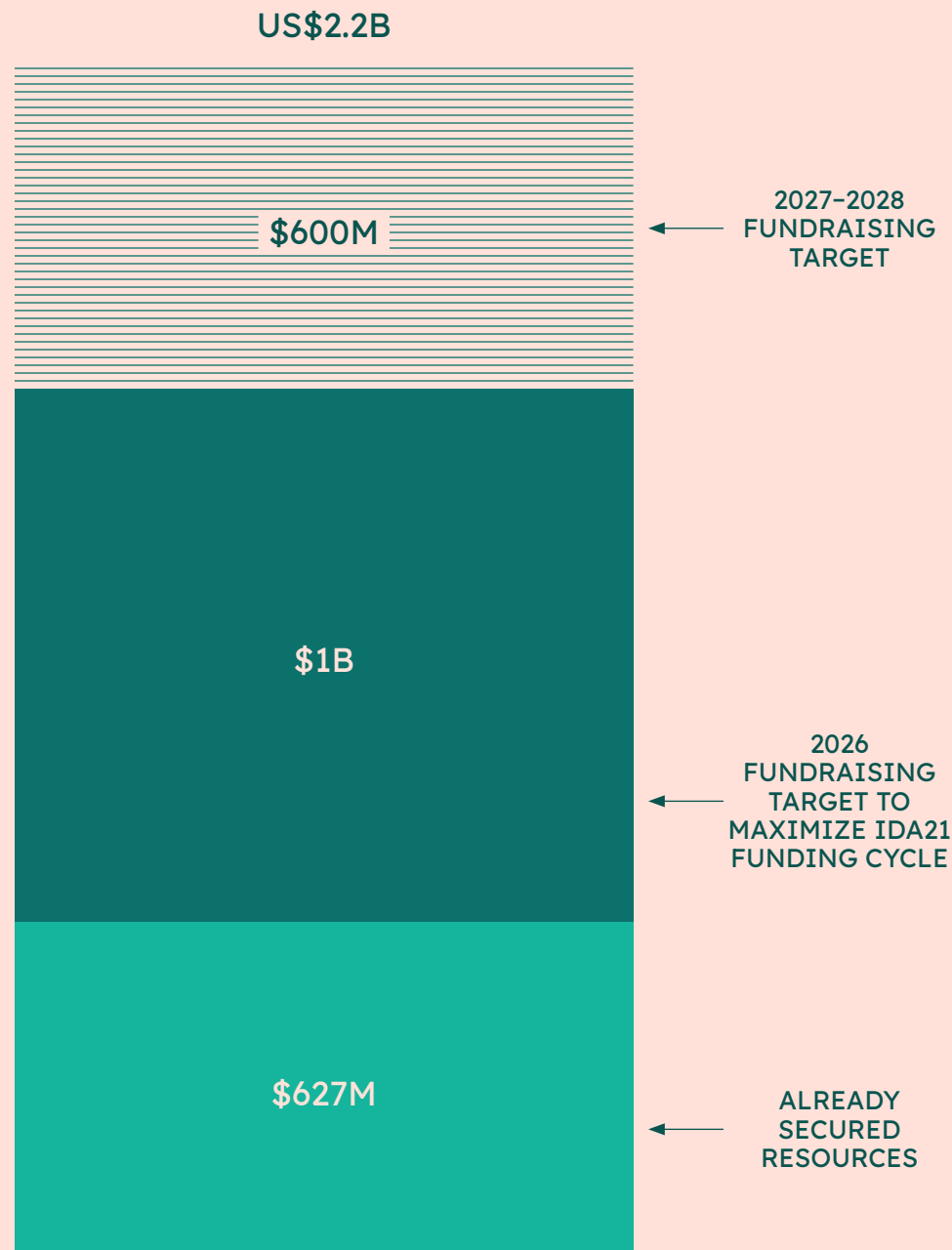
US\$2.2 BILLION IS REQUIRED TO FULLY DELIVER THE GFF TRANSFORM 2030 STRATEGY

With full financing through 2030, the GFF will expand its reach to at least 50 partner countries, which together represent 80 percent of the world's burden of maternal and child deaths.

Breakdown of total GFF expenditures 2026–2030



In 2026, the GFF is seeking US\$1B toward the total five-year funding need



GFF INVESTMENT OPPORTUNITY

GFF 2030 IMPACT

With full funding, by 2030 the GFF will mobilize:

\$12.5B in WBG IDA and IBRD financing	\$17.8B in global partner resources	\$21.4B in domestic resources
---	---	---

Bringing lifesaving care to hundreds of millions of women, children, and adolescents:

254M Modern family planning for women and adolescent girls	126M Antenatal care for pregnant women	194M Safe deliveries for pregnant women
146M Early breastfeeding for newborns	208M Vaccinations for children	



©Henri Lombard/World Bank



**GLOBAL
FINANCING
FACILITY**

www.globalfinancingfacility.org
www.linkedin.com/company/thegff
gffsecretariat@worldbank.org